

AC 3150

Wireless MU-MIMO Gigabit Router

Archer C3150



Highlights

- **Achieve Maximum Wi-Fi Speed** – 1000Mbps over 2.4GHz and 2167Mbps over 5GHz bands
- **NitroQAM™(1024-QAM) Technology** – Deliver 25% more data stream than other latest(256-QAM) routers at the same time
- **MU-MIMO Technology** – Allows your router to run several devices at the same time, providing speeds up to 4X faster than standard AC routers.
- **Smart Connect Technology** – Automatically selects the best available band for each device.
- **1.4GHz Dual-Core Processor** – Run multi-task simultaneous with high performance and stability



AC3150



NitroQAM¹



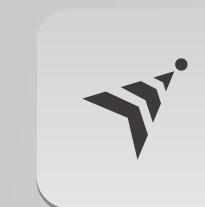
4-Stream
11AC



MU-MIMO



Smart
Connect



Beamforming
Technology



Dual-Core
1.4 GHz CPU

Features



Speed

- Ultimate Wireless Speed – Combined wireless speeds up to 1000(over 2.4GHz) and 2167(over 5GHz) Mbps
- NitroQAM Technology – Uses NitroQAM(1024-QAM) modulation scheme for higher data thru-puts, boosting wireless speeds up by 25%
- MU-MIMO Technology – Run several mobile devices at the same time and provides 4X faster speed than standard AC routers
- Support 802.11 ac – Offering 3 times faster data rate than 802.11n in a single stream
- Dual-core CPU – 1.4GHz dual-core CPU and 2 co-processors handle multi-task and boost data transfer rate



Wi-Fi Range

- Ultimate Range Wi-Fi – 4 dual band detachable high-performance antennas with high-powered amplifier ensure the widespread coverage and transmission stability
- Wi-Fi with Beamforming – Beamforming technology locate the connected devices and further improves the Archer C3150's range and the signal strength to each mobile device, delivering a more reliable and efficient wireless connection



Reliability

- Simultaneous Dual Band – Creates two separate Wi-Fi bands for connecting more devices to your network without a drop in performance
- IP QoS – Advanced QoS automatically recognizes & prioritizes streaming & gaming applications
- Smart Connect Technology – Dynamic Smart Connect technology automatically selects the best available band for each device.

Features



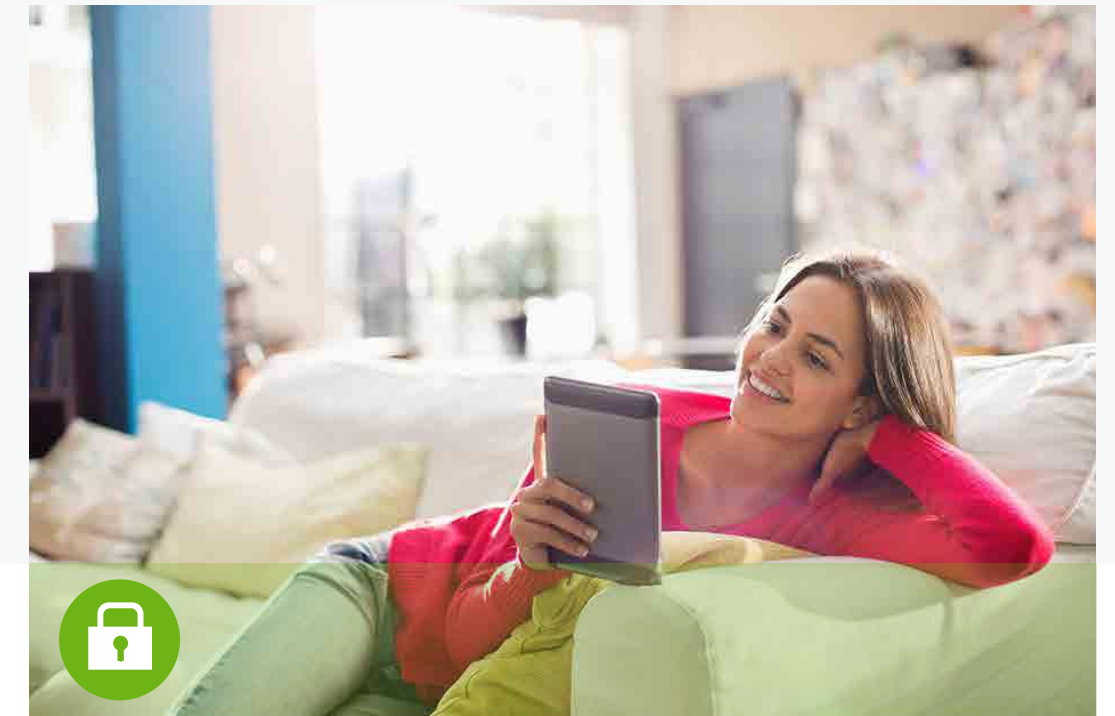
Easy Sharing

- Dual USB Ports for Fast Sharing – With one ultra-fast USB 3.0 port and one USB 2.0 port, you can access and share a printer as well as your files and media locally. Via the router's FTP server, you can also have access to your files & media with networked devices remotely
- 10x Faster Transfer Speed – The USB 3.0 port provides up to 10x faster USB hard drive access than earlier USB 2.0 connections
- Built-in Print Server – Supports wireless printing from multiple computers (works in conjunction with a USB Printer)
- Built-in Media Server – Allows users to play music, video and view photos



Ease of Use

- Intuitive Web UI– Ensures simple and quick Installation without hassle.
- Fast Encryption – Easy one-touch WPA wireless security encryption with the WPS button
- Easy On/Off – Wi-Fi On/Off Button and LED On/Off allow users to turn wireless radio and LED on or off separately
- Power On/Off – Convenient power saving
- Hassle-free Management with Tether App – Easy network management at your fingertips with TP-LINK Tether App on any Android and iOS devices

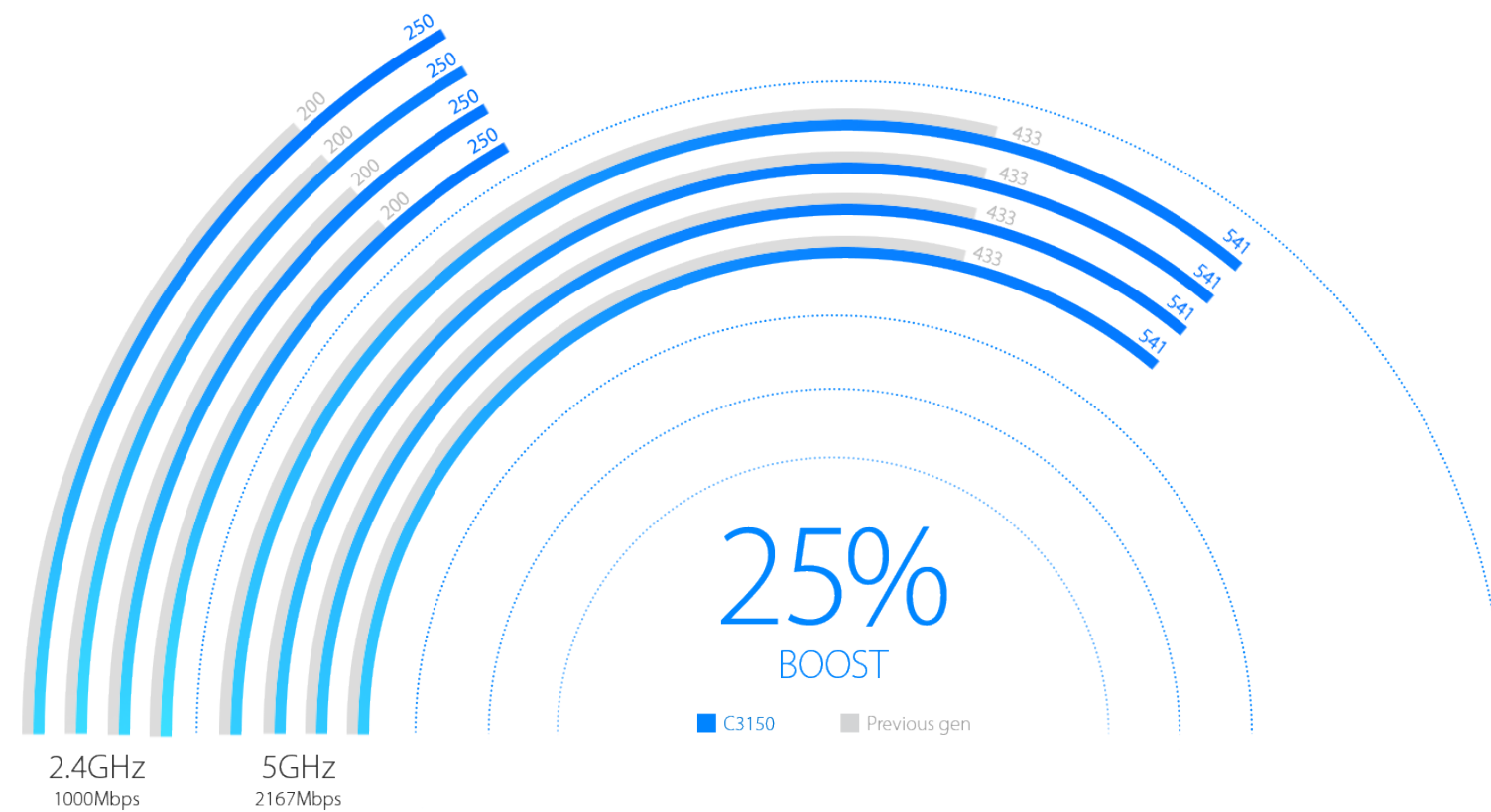


Security

- Access Control – Guest Network Access provides secure Wi-Fi access for guests
- Parental Control – Establish restricted access policies for all connected devices
- Easy Bandwidth Management – IP-based Bandwidth Control makes it easier for you to manage the bandwidth of connected devices
- VPN Server – Support PPTP VPN and OpenVPN , easily setup a secure connection between your private networks to the Internet
- Encryptions for Secure Network – WPA-PSK/WPA2-PSK encryptions provide active defense against security threats for user networks

4-Stream and NitroQAM for Maximum Wi-Fi Speed

The Archer C3150 boasts a powerful combination of 4-Stream technology and advanced Broadcom® NitroQAM™ technology, which boosts wireless speeds up by 25%. This provides the speed and elite performance that you need to support your most demanding online applications, including simultaneous 4K streaming and online gaming.



Faster Connections with MU-MIMO & Smart Connect

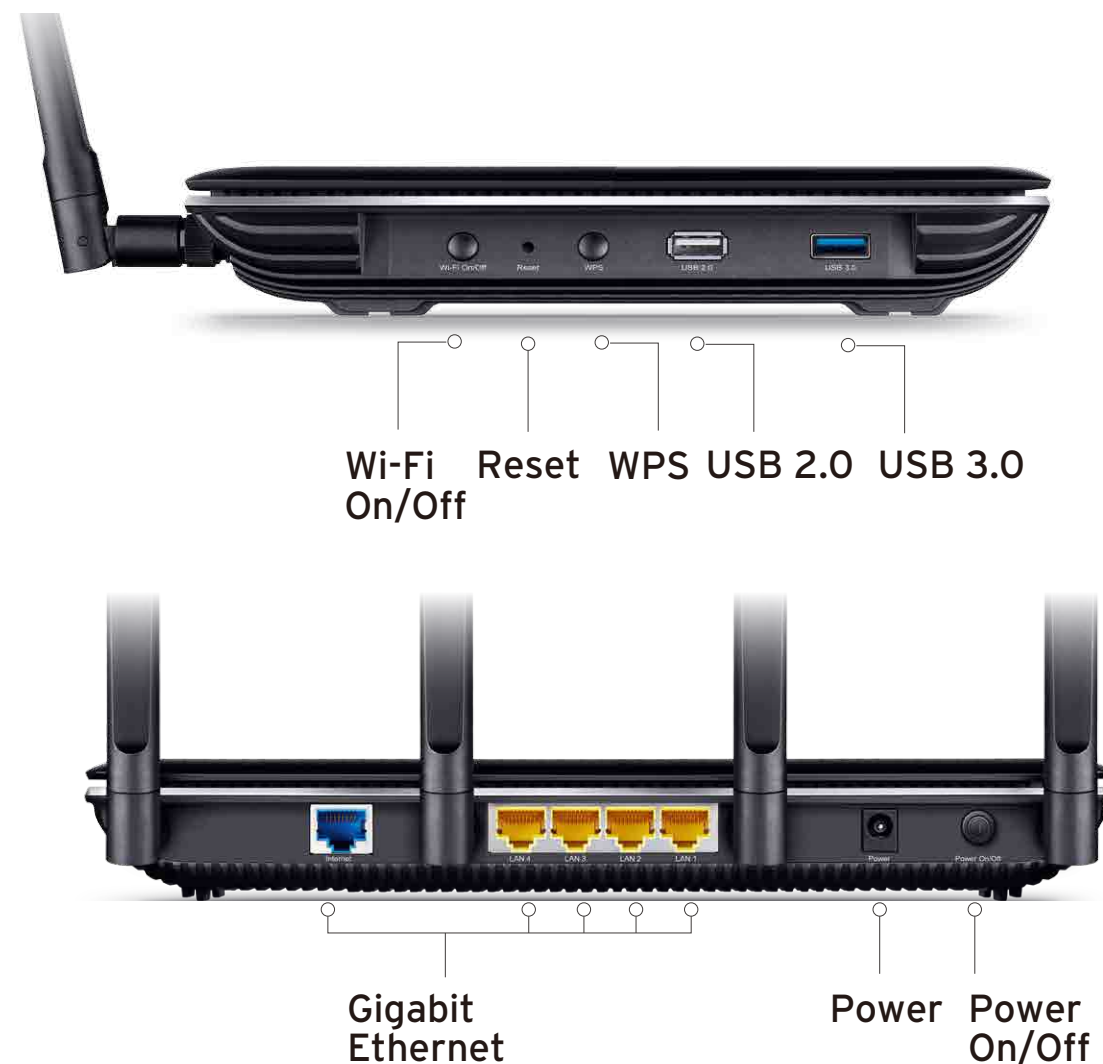
With MU-MIMO technology, the Archer C3150 can provide four simultaneous data streams, allowing all connected devices to achieve speeds up to 4X faster than standard AC routers. Moreover, dynamic Smart Connect technology automatically selects the best available band for each device.



Specifications

Hardware

- **Ethernet Ports:** 4 10/100/1000Mbps LAN Ports & 1 10/100/1000Mbps WAN Port
- **USB Port:** 1 USB 3.0 Port + 1 USB 2.0 Port
- **Button:** WPS Button, Reset Button, Wireless On/Off Button, LED On/Off Button, Power On/Off Button
- **External Power Supply:** 12V/5A
- **Dimensions (W x D x H):** 10.4×7.8×1.5 in. (263.8×197.8×37.3mm)



Wireless

- **Wireless Standards:** IEEE 802.11ac/n/a 5GHz, IEEE 802.11b/g/n 2.4GHz
- **Frequency:** 2.4GHz and 5GHz
- **Signal Rate:** 2167Mbps at 5GHz, 1000Mbps at 2.4GHz
- **Transmit Power:** CE: <20dBm(2.4GHz), <23dBm(5GHz)
FCC: <30dBm
- **Reception Sensitivity:**
 - 5GHz: 11a 6Mbps: -91dBm
 - 11a 54Mbps: -72dBm
 - 11n HT20: -70dBm
 - 11n HT40: -69dBm
 - 11ac HT20: -60dBm
 - 11ac HT40: -61dBm
 - 11ac HT80: -56dBm
 - 2.4GHz: 11g 54Mbps: -73dBm
 - 11n HT20: -72dBm
 - 11n HT40: -69dBm
- **Wireless Function:** Enable/Disable Wireless Radio, WDS Bridge, WMM, Wireless Statistics
- **Wireless Security:** 64/128-bit WEP, WPA/WPA2, WPA-PSK/WPA-PSK2 encryptions

Specifications

Software

- **WAN Type:** Dynamic IP/Static IP/PPPoE/PPTP(Dual Access)/L2TP(Dual Access)/Bigpond
- **DHCP:** Server, Client, DHCP Client List, Address Reservation
- **Quality of Service:** WMM, Bandwidth Control
- **Port Forwarding:** Virtual Server, Port Triggering, UPnP, DMZ
- **Dynamic DNS:** DynDns, Comexe, NO-IP
- **VPN Server:** PPTP, Open VPN
- **Access Control:** Parental Control, Local Management Control, Host list, Access Schedule, Rule Management
- **Firewall Security:** DoS, SPI Firewall, IP Address Filter/Domain Filter, IP and MAC Address Binding
- **Protocols:** Supports IPv4 and IPv6
- **USB Sharing:** Supports Samba(Storage)/FTP Server/Media Server/Printer Server
- **Management:** Access Control, Local Management, Remote Management
- **Guest Network:** 2.4GHz guest network x 1, 5GHz guest network x 1

Others

Package Contents

- AC 3150 Wireless MU-MIMO Gigabit Router Archer C3150
- 4 Detachable Antennas
- Power Supply Unit
- Ethernet Cable
- Quick Installation Guide

Certification

- CE, FCC, RoHS

System Requirements

- Microsoft Windows 98SE, NT, 2000, XP, Vista™ or Windows 7, 8, 8.1, 10, MAC OS, NetWare, UNIX or Linux
- Internet Explorer 11, Firefox 12.0, Chrome 20.0, Safari 4.0, or other Java-enabled browser
- Cable or DSL Modem
- Subscription with an Internet Service Provider (for Internet access)

Environment

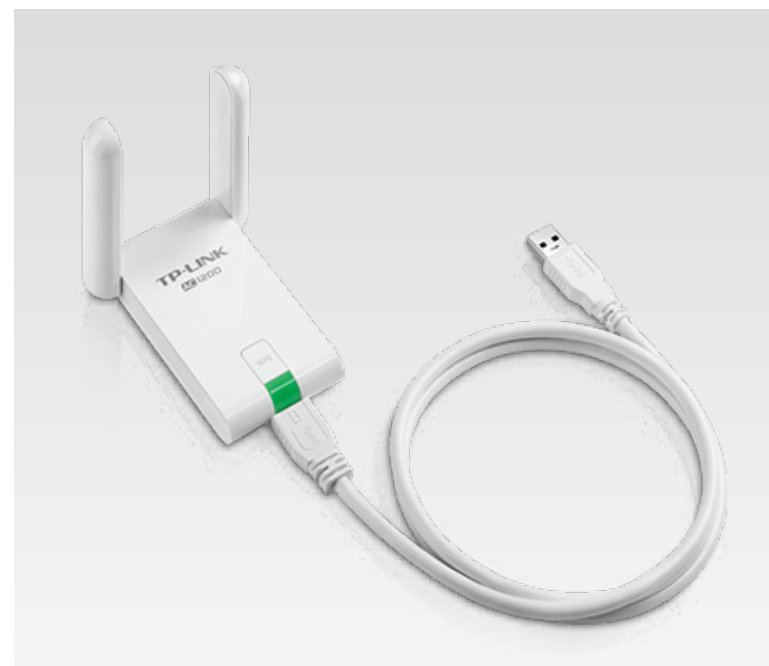
- Operating Temperature: 0°C~40°C (32°F ~104°F)
- Storage Temperature: -40°C~70°C (-40°F ~158°F)
- Operating Humidity: 10%~90% non-condensing
- Storage Humidity: 5%~90% non-condensing

Others

Ideal to use with



- AC1900 Wireless Dual Band PCI Express Adapter Archer T9E



- AC1200 High Gain Wireless Dual Band USB Adapter Archer T4UH

Similar Products



- AC3200 Wireless Tri-Band Gigabit Router Archer C3200



- AC2600 Wireless Dual Band Gigabit Router Archer C2600



For more information, please visit

<http://www.tp-link.com/en/products/details/?categoryid=&model=Archer+C3150>

or scan the QR code left

Specifications are subject to change without notice. TP-LINK is a registered trademark of TP-LINK Technologies CO., Ltd. Other brands and product names are trademarks or registered trademarks of their respective holders. No part of the specifications may be reproduced in any form or by any means or used to make any derivative such as translation, transformation, or adaptation without permission from TP-LINK Technologies CO., Ltd.

Maximum wireless speed of up to 3150Mbps is the theoretical data rate derived from IEEE standard 802.11 specifications. Actual data throughput and wireless coverage will vary due to network conditions and environmental factors including volume of network traffic, building materials and construction, network overhead, actual data throughput rate, and wireless coverage. TP-LINK makes no express or implied representations or warranties about this product's compatibility with any future standards. 802.11ac 1300Mbps is approximately 3 times faster than 802.11n 450Mbps. 2.4GHz Performance Mode requires 256 QAM support on Wi-Fi client.

www.tp-link.com